





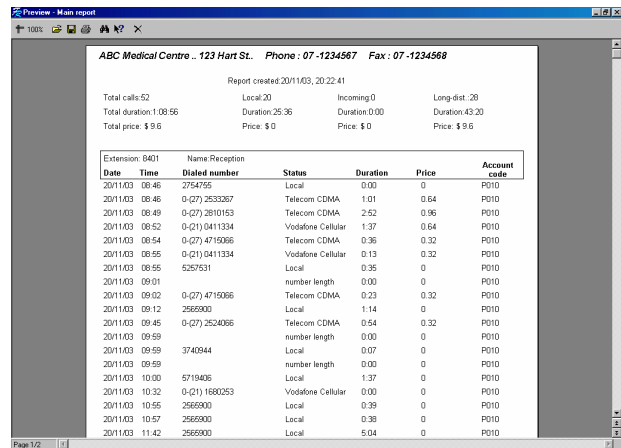
Win32CallAccounting

The affordable telephone tracking solution for small businesses

-  **Do you manage your telephone usage and costs?**
-  **Do you realise costs associated with your telephones are variable and may represent your second or third largest monthly expense?**
-  **Are your employees efficiently using telephones during business hours?**
-  **Is your network provider billing you correctly?**

22% of the average business' phone calls are non-business related so why not utilise Win32Call Accounting to MANAGE:

- Employee Productivity
- Employee Use and Abuse
- Billing for professional services
- Correct billing by your Network Service provider
- Allocation of costs
- Guest Billing (Hospitality)



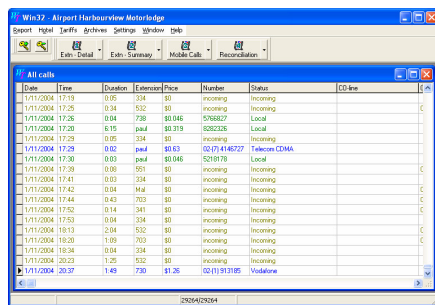
Report created 20/11/03, 20:22:41

Total calls: 52 Local: 20 Incoming: 0 Long-dist: 28
 Total duration: 1:09:55 Duration: 25:36 Duration: 0:00 Duration: 43:20
 Total price: \$ 9.6 Price: \$ 0 Price: \$ 0 Price: \$ 9.6

Extension	Date	Time	Name	Reception	Dialed number	Status	Duration	Price	Account code
0401	20/11/03	08:46			2754755	Local	0:00	0	P010
	20/11/03	08:46			0-(27) 2533267	Telecom CDMA	1:01	0.64	P010
	20/11/03	08:49			0-(27) 2810153	Telecom CDMA	2:52	0.96	P010
	20/11/03	08:52			0-(21) 0411334	Vodafone Cellular	1:37	0.84	P010
	20/11/03	08:54			0-(27) 4719086	Telecom CDMA	0:36	0.32	P010
	20/11/03	08:55			0-(21) 0411334	Vodafone Cellular	0:13	0.32	P010
	20/11/03	08:55			6257631	Local	0:35	0	P010
	20/11/03	09:01				number length	0:00	0	P010
	20/11/03	09:02			0-(27) 4719086	Telecom CDMA	0:23	0.32	P010
	20/11/03	09:12			2566900	Local	1:14	0	P010
	20/11/03	09:45			0-(27) 2524086	Telecom CDMA	0:54	0.32	P010
	20/11/03	09:59				number length	0:00	0	P010
	20/11/03	09:59			3740344	Local	0:07	0	P010
	20/11/03	09:59				number length	0:00	0	P010
	20/11/03	10:00			6719406	Local	1:37	0	P010
	20/11/03	10:32			0-(21) 1680253	Vodafone Cellular	0:00	0	P010
	20/11/03	10:55			2566900	Local	0:39	0	P010
	20/11/03	10:57			2566900	Local	0:39	0	P010
	20/11/03	11:42			2566900	Local	5:04	0	P010

Call Accounting may reduce your communications costs by up to 25%

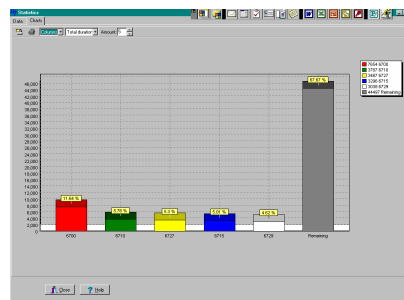
It's never been easier to get the **statistical information** you need to make critical business decisions quickly & easily



Date	Time	Duration	Extension	Price	Number	Status	CD-line
1/11/2004	17:13	0:29	324	\$0		incoming	
1/11/2004	17:25	0:34	532	\$0		incoming	
1/11/2004	17:26	0:01	790	\$0.046	521927	Local	
1/11/2004	17:28	0:15	444	\$0.319	0202295	Local	
1/11/2004	17:29	0:05	334	\$0		incoming	
1/11/2004	17:29	0:02	444	\$0.03	020744827	Telecom CDMA	
1/11/2004	17:30	0:03	444	\$0.046	521927	Local	
1/11/2004	17:38	0:08	351	\$0		incoming	
1/11/2004	17:41	0:03	334	\$0		incoming	
1/11/2004	17:42	0:04	444	\$0		incoming	
1/11/2004	17:44	0:43	792	\$0		incoming	
1/11/2004	17:52	0:11	341	\$0		incoming	
1/11/2004	17:53	0:04	334	\$0		incoming	
1/11/2004	18:13	2:01	532	\$0		incoming	
1/11/2004	18:28	1:03	792	\$0		incoming	
1/11/2004	18:34	0:04	334	\$0		incoming	
1/11/2004	20:23	1:26	532	\$0		incoming	
1/11/2004	20:37	1:49	792	\$1.26	021131316	Vodafone	

- Statistics graphs
- Motel Check In / Check Out
- Guest Invoicing

- Unlimited Reports
- 4 Standard reports – accessed by toolbar
- Customise Reports to suit requirements
- Track Account Codes
- Can run as a 'Service'



Win32CallAccounting

INFORMATION THE WAY YOU WANT IT FOR YOUR BUSINESS AT THE PRESS OF A BUTTON

Detail Report of All Calls by Date, Time & Extension

Reports all call details. Includes the duration, cost and dialled number for all calls made by each extension

Summary Report by Date, Time & Extension

Total call activity in summary. This shows Total Calls, Total Cost and Total Duration for each extension.

Statistics

Call details shown in graphical format in either a Bar or Pie Graph

Account Codes

Often a requirement for on billing of professional services. Reports can be generated by Account codes. Extensively used by Legal & Accounting Companies

Customised Call Rates

Simplicity is the key in allowing you to change these as required.

Customised Reports

These can be developed should you have a special requirement.

MEETING THE NEEDS OF THE HOSPITALITY INDUSTRY

Guest Check In /Out

Feature available on the hospitality package. The report totals the guests' telephone usage for the duration of their occupancy so that it can be included in the checkout bill.

Miscellaneous Service

Include rates for Room Occupancy and Meals. These can be entered on checkout and are included along with the telephone usage when bill generated at checkout

Mark Up & Fixed Costs

Additional charges can be added to include both mark ups and fixed costs

Charge for Incoming Calls

Incoming calls are a cost to your business. They utilise trunk lines and while the call is in progress they may be impeding potential customers calling in.

Specifications

Processor
RAM
Hard Disk
PABX Input
PC Operating System

Separate data collection available on a Network server

– Windows or Linux Optional

Capacities

Call Records
Account Codes
Reports
Extensions
Sites
Supported Systems

Pentium 2 or above
64K
2 Gig Bit (Minimum)
RS232, IP (depends on PBX)
Windows 98, NT, 2000, XP
Works as service under, NT, 2000, XP

Unlimited
Unlimited
4 Standard (additional by request)
50 or less recommended
Single
Over 110 supported PBX systems and models